



ÉCOLE FRANÇAISE DE BÂLE
depuis 1884



Welcome to the École Française de Bâle

Information booklet



Daycare, Maternelle, Elementary school, 6th grade

HISTORY OF THE SCHOOL

1884: The École Française de Bâle Foundation was created by Alsatian expatriates after the 1870-71 Franco-Prussian War. Initially providing evening classes for French children whose families had fled the war, to supplement their Swiss education, and allow them to study the language and history of their country of origin.

1914: Classes were suspended at the outbreak of the First World War. They did not resume until six years later, in 1920, at the consular premises of the city of Basel.

1921: The establishment of evening courses for adults significantly expanded the school and opened it up to the non-French population. The courses seeded the French language into the banking, commercial and industrial fields within Basel.

1926: Day schooling for children started and adult evening classes were maintained for a period of time.

1929: Acquisition of school premises at Austrasse 5, Basel.

1956: For the first time, the new school year started in Autumn, on the same date as in France, rather than in the Spring.

1989: Relocation of the school to Engelgasse 103, Basel.

2011: Merger with the Maternelle (preschool), Dornacherstrasse 192, Basel.

2013: Establishment of the Crèche (daycare) at Dornacherstrasse 192, Basel.

Séance du
6 Octobre 1884.

La séance est ouverte à 8 h. 1/2
Présents: ^{Président} M. M. H. Lohel, Samuel, Siegfried
Herschling & Wörzinger.

Lecture et sanction des
Procès-verbal de la séance
précédente qui est adoptée sans
restriction.

M. le Président donne
la parole à M. Herschling pour la
lecture de son projet de Statuts dont un
exemplaire a été envoyé par lui aux
membres du Comité.
Une longue et intéressante discussion
s'engage sur l'adoption du projet
des Statuts.

Outre les membres fondateurs, actifs, sur
la proposition de M. Siegfried, il est créé une troisième
catégorie de membres, les "associés". Cette qualité
sera concédée seulement après décision du
Comité, la rédaction acceptée à pour but
d'accueillir les personnes de nationalité
allemande (autres que les Alsaciens et les
Lorrains originaires de ces deux pays).

M. Lohel propose l'adoption de l'article 17
sur la liquidation éventuelle de la Société.
La proposition est acceptée.

Une fois les Statuts votés, M. le Président

seul et de ses négociations au sujet d'une
salle convenable pour l'installation. Rien
n'est encore fait sur ce point.

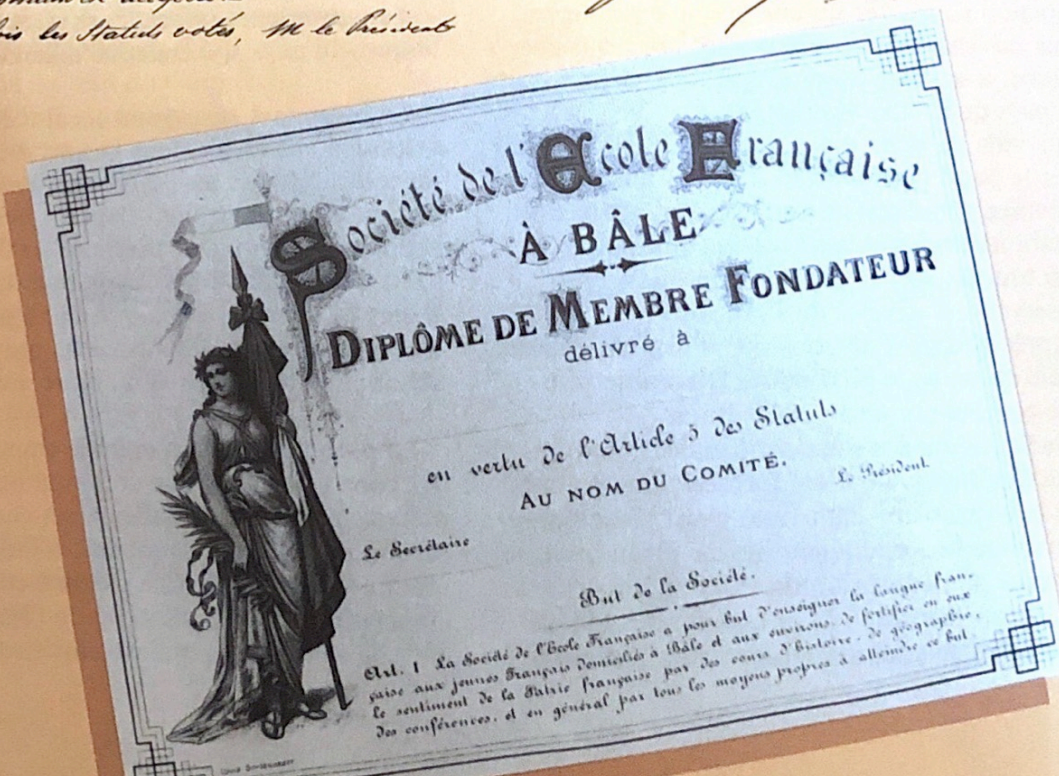
A la suite de l'adoption des
Statuts il a été décidé à la
majorité des voix des membres présents
1. que le Comité se considérât
l'instituant, c.à.d. que même
du mandat dont l'avait investi
la colonie française, vers sa
réunion du 24 Septembre 1884, il
entendait ne pas soumettre les
Statuts votés définitivement à
la discussion des membres qui
assisteraient à la présente Société.

2. qu'il n'y avait pas lieu de
désigner spécialement de président
d'honneur.

3. que une lettre serait rédigée par
M. Lohel & Samuel et soumise au
Comité, lors de sa prochaine réunion;
Cette lettre doit faire appel à tous les
Français de Bâle & aux personnes
s'intéressant à la France.

La séance est levée à 11 heures 1/4

Le Président
Siegfried
Le Secrétaire
Herschling



The École Française de Bâle welcomes children starting at the Daycare until the end of the 6ème, i.e. from the age of 3 months to 12 years, regardless of their nationality or place of residence. It has a Daycare section (Crèche), a Preschool section (Maternelle), an Elementary school section (Elémentaire) and a 6th grade (6ème) class.

The school is located at two separate, easily accessible sites near the center of Basel, one grouping the Daycare and Maternelle sections, the other the Elementary school section and the 6th grade class.

The École Française de Bâle is a partner of the French Education Abroad network (Agence pour l'enseignement français à l'étranger – «AEFE») and is recognized by the Ministry of Education of the Canton of Basel-Stadt (Erziehungsdepartement) by the French Académie of Strasbourg. The school is inclusive of all cultures from all over the world and, being located in Switzerland, places particular emphasis on understanding Swiss culture.



The École Française de Bâle partner of the AEFE network

The Agency for French Education Abroad (AEFE) is a French public institution responsible for monitoring and coordinating the network of French schools establishments outside France. Placed under the supervision of the Ministry of Europe and Foreign Affairs, it represents a school network of more than 566 establishments with over 390,000 students in 138 countries.

The AEFE provides public service missions relating to education for French children living outside France, as well as local children or children from other countries (more than 60% non-French citizens). The AEFE contributes to the influence of the French language and culture. It helps the strengthen relationships between French and foreign education systems.

The École Française de Bâle is a partner school of the AEFE network. Its certification attests its conformity to the educational programs and objectives of the French education system.



THE STUDENTS' PARENTS ASSOCIATION

The École Française de Bâle, like many French school abroad, is managed by a parents' association, the Société de l'École Française de Bâle. It is governed by its own statute in accordance with the provisions of articles 60 and following of the Swiss civil code on associations.

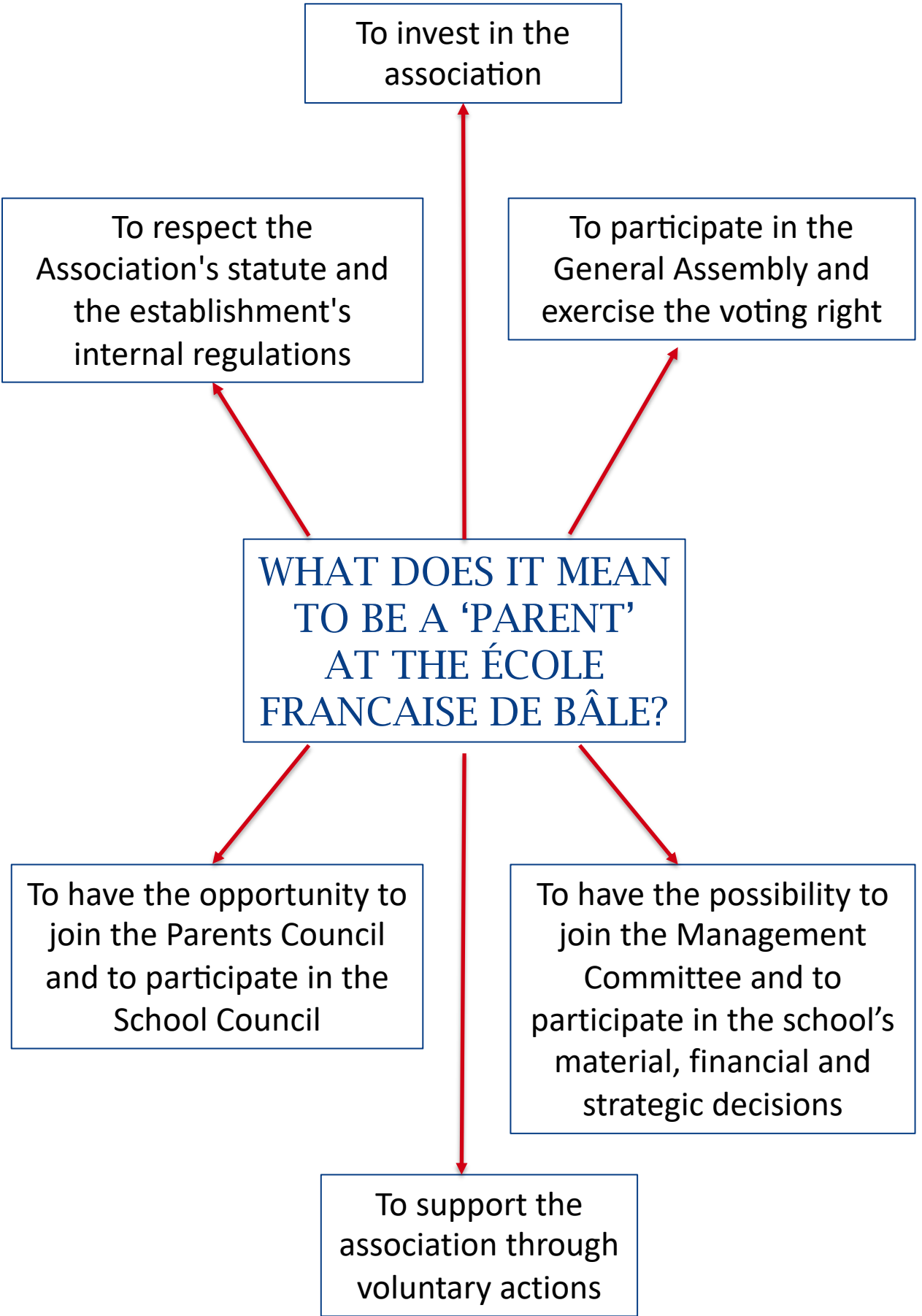
Membership of the association is open to all parents with at least one child attending the École Française de Bâle and to any external adult who wishes to be a part of the association.

The association meets at least once a year in a General Assembly to deliberate on points proposed by the Management Committee or the members of the association and to approve the accounts of the past school year.

The presence of members at the General Assembly is essential for the proper functioning of the association.

The association is headed by a Management Committee elected for a period of two years during the General Assembly. In partnership with the Directors of the École Française de Bâle, it debates and takes the material, financial and strategic management decisions of the school.

It is made up of 6 to 9 volunteer members and 3 ex-officio members: the French Consul General in Zurich, the Cooperation and Cultural Action Advisor to the French Embassy in Bern and the Academy Inspector – Director of the Departmental Services of National Education of Haut-Rhin.



THE SCHOOL'S FUNCTIONS

Executive Director

The main mission of the director is to provide children with the best learning conditions by leading the pedagogical and educational policy of the establishment, in consultation with the teachers and representative bodies of the École Française de Bâle.

In addition, the Executive Director ensures the building of a strong network with all of the local entities, be they cultural, social, diplomatic or economic.

Finally, the director is the essential connection between the school and other official governmental and diplomatic bodies.

The School Director has hierarchical authority over the school staff and functional hierarchical authority over the teaching assistant.

Financial Director

The Financial Director works in close collaboration with the Executive Director, the Administrative and Extracurricular Director and the Management Committee. He/she prepares and transmits the financial information on which the strategic choices of the École Française de Bâle are based. He/she coordinates the financial management policy and supervises the accounting-finance department.

The Financial Director implements financial management tools, establishes budgets, optimizes capital management, manages debt collections and negotiates loans with banks in collaboration with the Management Committee.

Administrative and Extracurricular Director

The Administrative and Extracurricular Director plans, organizes, directs and controls administrative activities and budgets.

In addition, he/she manages the organization of after-school activities (planning, contacting extra-curricular personnel, monitoring registrations, etc.), the canteen and the supervision of children outside mealtimes.

The Administrative and Extracurricular Director has hierarchical authority over the 2 administrative assistants (maternelle and elementary) as well as over after-school activities staff (canteen, after-school activities, holiday camp).



THE SCHOOL'S FUNCTIONS

Teaching assistant

The Pedagogical Assistant assists the School Director in his/her duties and replaces absent teachers. He/she takes part in teachers's meetings, cycle's meetings, school meetings and delegate councils, as well as pedagogical meetings. He/she writes up the minutes.

In addition, he/she is in charge of writing and summarizing the Newsletter.

Administrative and Extracurricular Director Assistants

They assist the Administrative and Extracurricular Director and manage the reception of families, organize visits and enrolment/re-enrolment requests. They send out communications and help organize and prepare official Management Committee and School Council events (AGMs, elections, etc.). The Administrative and Extracurricular Management Assistants also support the educational and extracurricular teams.

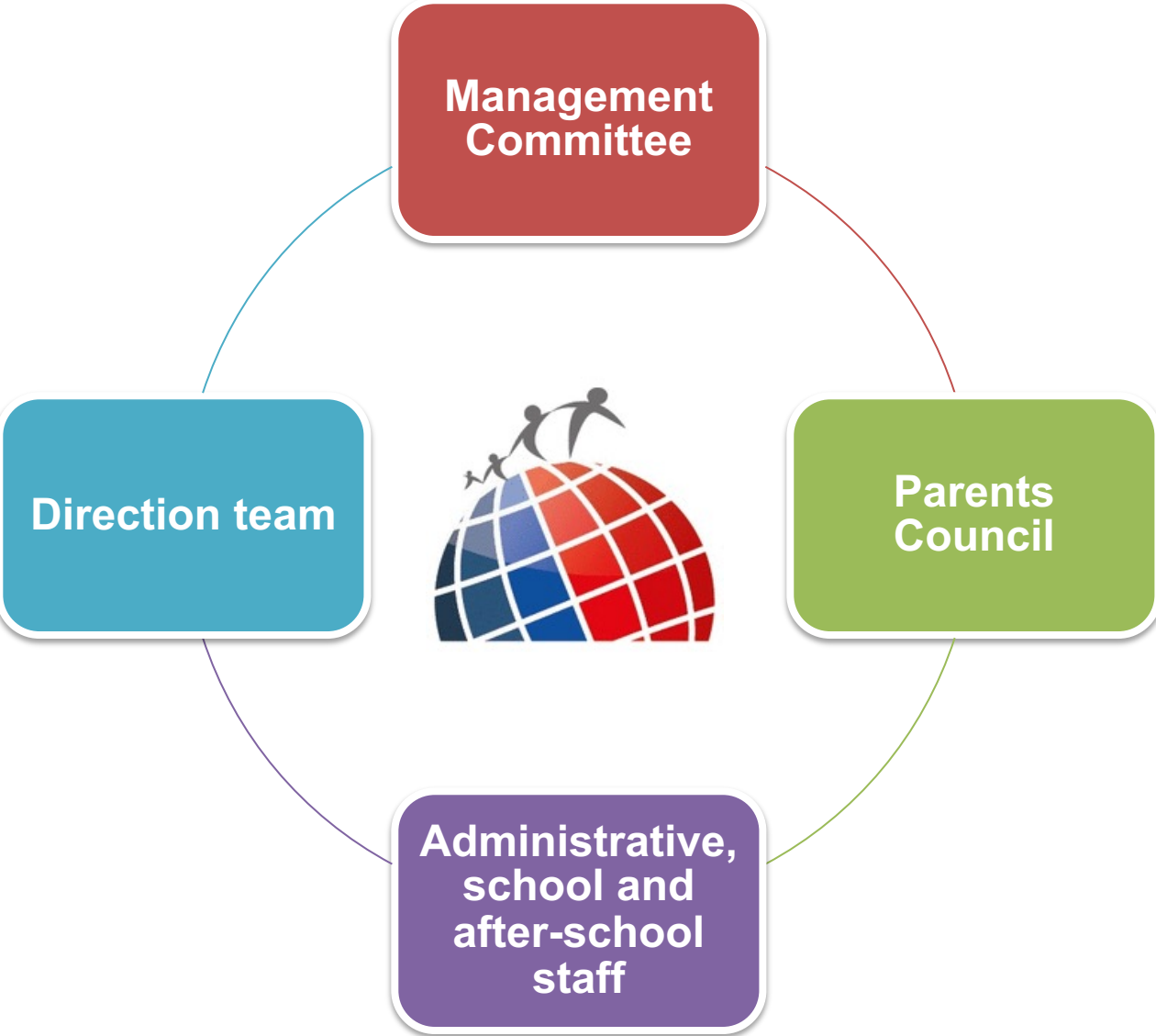
In addition, they coordinate extra-curricular activities, such as the canteen, after-school workshops and daycare.



Educational team

The involvement of teachers, educators, childcare assistants, daycare assistants and after-school staff contributes to the children's development in a caring environment.

The success of former students in secondary studies and the good results in language exams showcase the quality of the work of the educational team.



THE ROLE OF THE SCHOOL'S AUTHORITIES

Management Committee (Comité de Gestion)

The Management Committee is the executive body of the association and manages the legal, administrative and financial aspects of the establishment, in partnership with the direction team. It defines the budget, fixes the school fees, ensures the management of current and intangible assets and on the proposal of the Executive Director and the Administrative and Extracurricular Director, recruits local staff.

Participants: Honorary members of the association elected for a two-year term at the **Annual General Meeting**. This mandate is renewable.

Constitution of the committee: 6 to 9 members whose statutory functions are president, vice-president, treasurer and secretary.

All parents can become active members of the Association and present their candidacy to the Management Committee.

Parents Council (Conseil des Parents)

The Parents Council is a group of representatives for parents. It coordinates and helps organize many events during the school year (Stadtlauf, Christmas party, end of year party, etc.) and is a member of the **School Council**.

Participants: parent volunteers elected for a one-year term at the start of the school year by a vote from all parents.

School Council (Conseil d'école)

The School Council is the body responsible for the school's internal regulations and the school calendar. It participates in the development of the school project and intervenes on questions related to school life.

Participants: the school director, teachers and the Parents Council.

General Assembly

The decision-making body of the association, the General Assembly, meets once a year at the end of the calendar year. Each association member has one voting right.

The main policy provisions of the establishment are taken at the General Assembly. The presence of members is essential.

Participants: all association members.



THE SCHOOL JOURNEY

The school programs taught at the École Française de Bâle are those of the French National Education. The school year, which starts at the beginning of September and ends at the beginning of July, consists of many projects that allow academic excellence to be fulfilled through personal learning, language learning, environmental education and social development.

Since the start of the 2019-20 school year, the École Française de Bâle has been committed to implementing a digital approach with the use of tablets in classrooms. This is a reasonable and responsible educational use, in agreement with the digital plan implemented by the National Education.

The “La Petite Bulle” daycare :

The “La Petite Bulle” daycare welcomes children from 3 months to 3 years old in an appropriate and suitable space with supervision by early childhood professionals. The children are divided into 2 groups: a group from 3 months to 18 months and a group from 18 months to 3 years of age.

Our capacity allows the team to be available and attentive to each child. Attendance can range from 1 to 5 days a week.

Our mission: to offer a personalized framework for each child while respecting his/her rhythm and his/her development.

Maternelle :

Maternelle section (preschool) provides instruction and education from the age of 3, to develop the child's knowledge and skills to gradually become more independent as a student. The implementation of the program takes into account the stages and the pace of the child's development.

Students follow the first cycle of Maternelle: learning.

Our mission: to help each child become independent and to acquire the knowledge and skills to easily integrate into the CP (1st grade).

Elementary school :

Elementary school welcomes children from 6 to 10 years old, divided into 5 levels (CP, CE1, CE2, CM1 and CM2).

Students follow the last two cycles of Elementary school: fundamentals and consolidations.

Our mission: to consider the plurality and diversity of each student's skills. Develop reasoning, intellectual reflection, a sense of observation, a taste for experimentation and a creative imagination.

6ème :

The 6ème (6th grade) class at the École Française de Bâle was established in order to ensure a smooth transition into the Basel secondary school system. This 6ème allows direct access to the Swiss school system in Basel, without an entrance exam.

THE PURSUIT OF EDUCATION

School age alumni from the École Française de Bâle can attend the best establishments in the region, in France, Germany or Switzerland:

French or bilingual education (F/D)

The Lycée Franco-Allemand in Freiburg im Breisgau, the Collège des Missions in Blotzheim, the Collège Don Bosco in Landser, the Collège Jeanne d'Arc and the Collège Jean XXIII in Mulhouse, the public middle school of Hegenheim and Saint-Louis.

Swiss education

Swiss public and private schools in different cantons, Saint Charles College in Porrentruy. It should be noted that the Lycée de Laufen (BL) offers a bilingual French/German curriculum in collaboration with the Lycée Cantonal of Porrentruy, and that most Swiss high schools in the region offer a bilingual English/German baccalaureate (Matura) in accordance with Swiss school curriculum.

International education

Bilingual English/German curriculum at International School Basel (ISB), Swiss International School (SIS) or Bilingual Kids Academy (BKA), English-language institutions preparing for the International Baccalaureate (IB/American).

THE FRENCH vs. BASEL SCHOOL CURRICULUM

FRENCH SCHOOL COURSE			BASEL SCHOOL COURSE**			
		Age*	Age*			
DAYCARE (Crèche)		3 months to 3 yo	3 months to 4 yo		DAYCARE (Kita)	
PRESCHOOL (Maternelle)	PS	3 yo			PRESCHOOL (Kindergarten)	
	MS	4 yo	4 yo	1.		
	GS	5 yo	5 yo	2.		
PRIMARY SCHOOL (Élémentaire)	CP	6 yo	6 yo	3.	PRIMARY SCHOOL (Primarschule)	
	CE1	7 yo	7 yo	4.		
	CE2	8 yo	8 yo	5.		
	CM1	9 yo	9 yo	6.		
	CM2	10 yo	10 yo	7.		
SECONDARY SCHOOL (Collège)	6ème	11 yo	11 yo	8.	SECONDARY SCHOOL (Sekundarschule) Three levels pending on their grades: A, E, P	
	5ème	12 yo	12 yo	9.		
	4ème	13 yo	13 yo	10.		
	3ème	14 yo	14 yo	11.		
HIGH SCHOOL (Lycée)	2nde	15 yo	15 yo	12.	Vocational Education and Training (Berufliche Grundbildung) Upper Secondary Commercial (WMS) and IT School (IMS) Upper Secondary Specialized School (FMS) Baccalaureate School (Gymnasium)	
	1ère	16 yo	16 yo	13.		
	Terminale	17 yo	17 yo	14.		
			18 yo	15.		

*The reference date in the French School System is January 1st, while the reference date in the Basel School System is August 1st.

**Source: www.ed.bs.ch/welcome

LIFE AT SCHOOL

Welcome hours

The educational team welcomes children Monday to Friday from 7.30 am to 6.30 pm in daycare and maternelle, and from 7.45 am to 6.30 pm in elementary and 6th grade and offers them games and activities adapted to their age.

School catering

All meals are delivered by an external caterer. The menus are varied, balanced and adapted to the nutritional needs and ages of the children. Seasonal, certified organic fruits and vegetables are prioritized whenever possible. Food allergies are taken into account as much as possible in the preparation of meals.

After-school activities

The École Française de Bâle offers a full program of educational, sporting, artistic and reinforcement or discovery activities in French, English or German. These activities are supervised by educators and/or specialized teachers, and take place after classes and Wednesday afternoons.

Holiday camps

During the school holidays, there are holiday camps in both maternelle and elementary school with age-appropriate activities on different theme each week.

HIGHLIGHTS OF THE SCHOOL YEAR

The school year has several annual events that delight children and allow them to experience school differently.

The school participates each year in the "Stadtlauf" in November, a running race in the historic center of the Basel city, under the Christmas lights.



Teachers organize sporting meetings with neighboring schools (long race and handball championship).

The Christmas party and the end-of-schoolyear party are also very important events in the life of the school, particularly they allow the children to present a musical performance to all parents. It is also an opportunity to share a friendly moment between teachers and parents, in the company of the children.



AFFIRMED INTERNATIONAL AMBITION

With more than twenty different nationalities represented, the École Française de Bâle is open to everyone.

The school project is based on an ambitious modern languages policy offering early and intense learning of German and English.

The school offers students to take the Goethe Institute certification exams in German, Cambridge Assessment in English and DELF in French.

Students take part in various international events organized by the AEFÉ such as the speech contest or the "Ambassadeur en herbe" project.

Our partners:



We prepare for



CONTACTS & MAP

Where are we located?



Elementary school

Engelgasse 103
CH 4052 Basel
elementaire@efdb.ch
+41 (0)61 311 07 30

Daycare & Maternelle

Dornacherstrasse 192
CH 4053 Basel
maternelle@efdb.ch
+41 (0)61 271 75 72

creche@efdb.ch
+41 (0)61 331 07 71

Holiday camp

centreaere@efdb.ch

Executive Director

direction@efdb.ch
+41 (0)61 311 07 30

Financial Director

compta@efdb.ch
+41 (0)61 311 07 30

Administrative and Extracurricular Director

administration@efdb.ch
+41 (0)61 311 07 30

Management Committee

comite@efdb.ch

Parent Council

conseil@efdb.ch



ÉCOLE FRANÇAISE DE BÂLE
depuis 1884



The Daycare and
Maternelle are located
at the heart of a
former industrial
complex reclassified as
a cultural center, at
Dornacherstrasse 192.

The elementary school
and the 6th grad occupy
an elegant 1900 style
building, at Engelgasse
103.



www.efdb.ch

*We remain at your disposal for any
questions*